



FULLERTON COLLEGE HS OUTREACH NEWSLETTER



Monthly Newsletter of Programs and Services at Fullerton College

CONTENTS

Educational Partnerships
and Outreach
PAGE 1

Outreach Spring Events
PAGE 2

Special Admit vs. Dual
Enrollment
PAGE 3

Outreach Holiday Card
PAGE 4

CTE Programs & Holiday
Card
PAGE 5-7

EOPS Program
PAGE 8 & 9

Puente Program
PAGE 10-12

DSS Holiday Card
PAGE 13

Staff Directory
PAGE 14-15

Calendar of Events
PAGE 16



Fullerton College
Educational Partnerships and Outreach



Educational Partnerships & Outreach

BY FACULTY COORDINATOR ROLANDO SANABRIA

In this month's newsletter, you will find a calendar of our upcoming Spring 2022 events and a brief article outlining the differences between Special Admit and Dual Enrollment Programs. We also highlight several CTE Programs, along with the EOPS Program, and the Puente Program. In addition, you will also find a directory of FC staff that work with incoming students. Lastly, you will find several holiday cards from a number of our Programs. As we plan for Spring 2022, we look forward to returning to in-person services while maintaining number of virtual efforts. Early in January 2022, I will be emailing you a list of activities that will be hosted at FC that will assist your graduating seniors with their transition to FC. We also look forward to potentially hosting HS visits and our MAS Conference late in the Spring 2022 semester.

On behalf of FC and our High School Outreach Staff, we wish you Happy Holidays and a healthy New Year!

CONNECT WITH US:



[HTTPS://OUTREACH.FULLCOLL.EDU/](https://outreach.fullcoll.edu/)



[@FULLCOLL-OUTREACH](https://www.instagram.com/fullcoll-outreach)



OUTREACH@FULLCOLL.EDU



[FOLLOW US ON YOUTUBE](#)



HS OUTREACH SPRING EVENTS

Learn more about the upcoming Spring events listed below:

Outreach Event	Projected Date
Counseling 140	February - March
Future Hornet Info Nights	February - March
Financial Aid Applications Sessions	February - March
Family Academy	2nd Tuesday every month
Promise Info Night	March - April
Counselor Visits	April - June
Promise Welcome Celebration	May

FOR MORE INFORMATION, PLEASE VISIT OUR WEBSITE BELOW



[HTTPS://OUTREACH.FULLCOLL.EDU](https://outreach.fullcoll.edu)



OUTREACH@FULLCOLL.EDU



[MAKE A 1 ON 1 APPT.](#)



DUAL ENROLLMENT VS. SPECIAL ADMIT PROGRAM



DUAL ENROLLMENT AT YOUR DISTRICT

- Guided with Outreach Staff
- Free Courses
- Textbooks Provided
- Enrolled with only HS students (on HS campus)
- Electronic Special Admit Form
- Workshops on Application & Registration

BENEFITS

- Save Time
- Be College Ready
- Get Ahead
- Priority Registration
- Grade Recorded on College Transcript

SPECIAL ADMIT PROGRAM AT FC

- Self-guided by student
- Pay Health Fee
- Purchase your own textbooks
- Enrolled with other college students in course (may be on college campus)
- Downloadable Special Admit submit to Admissions



Please make sure to visit our [website](#) with further information on how to enroll for each program.



Career Technical Education Program Spotlight

BY DIRECTOR MARTHA PAYAN-HERNANDEZ

CONSTRUCTION TECHNOLOGY

The Construction Technology Associate in Science Degree is designed to prepare students for positions in the construction trade. The Construction Technology Certificate is designed to lead to entry-level employment in the construction industry as well as industry related positions.

Start here! CSTR 006 Residential Plumbing/Mechanical Systems (3 units)

DRONE TECHNOLOGY

The Fullerton Drone Lab not only teaches students to become better and safer pilots, but also teaches them the application of drones in various industries. Students from all industry sectors can learn how drones can help enhance their workplace, while learning to be safer in the skies. All of the training builds up to the optional FAA Part 107 Remote Pilot Certification exam. Drones can be used for applications in many fields. The Fullerton Drone Lab focuses primarily on the application of drones in the following areas: Surveying, Construction, Journalism, Real Estate, Marine Biology and many more.

Start here! TECH 150F Basic Drone Piloting (2 units)

CONNECT WITH CTE!



[HTTPS://WWW.CTE.FULLCOLL.EDU/](https://www.cte.fullcoll.edu/)



@CTE_FULLCOLL



[HTTPS://WWW.YOUTUBE.COM/CTE FULLERTON COLLEGE](https://www.youtube.com/cte_fullerton_college)



CTE Fullerton College



POINT OF CONTACT:
OUTREACH SPECIALIST
NICOLE CINTRON



[714-992-7190](tel:714-992-7190)



ncintron@fullcoll.edu



Career Technical Education Program Spotlight

BY DIRECTOR MARTHA PAYAN-HERNANDEZ

ENTREPRENEURSHIP

Fullerton College's Entrepreneurship program is designed to provide students with key considerations for starting and managing a business. Everyone can be an Entrepreneur. We will guide you step-by-step through solid business planning. Upon program completion, students will have a business plan and operational skills necessary to start or expand a business.

Start here! BUS 180F Small Business Management (3 units)



CONNECT WITH CTE!



[HTTPS://WWW.CTE.FULLCOLL.EDU/](https://www.cte.fullcoll.edu/)



@CTE_FULLCOLL/



[HTTPS://WWW.YOUTUBE.COM/CTE FULLERTON COLLEGE](https://www.youtube.com/cte_fullerton_college)



CTE Fullerton College



POINT OF CONTACT:
OUTREACH SPECIALIST
NICOLE CINTRON



[714-992-7190](tel:714-992-7190)



ncintron@fullcoll.edu



**BY SONIA DURAN
DIRECTOR OF EOPS**


Do you have students who need hands-on assistance through every step of their college journey? And who doesn't need help paying for books each term?

The EOPS/CARE Program may be able to help! Educate your students about EOPS/CARE by requesting a presentation either in-person, virtually, or recorded. Visit our presentation request form [here!](#) Or you can call us at (714) 732-5381.

CONNECT WITH US:

 [HTTPS://EOPS.FULLCOLL.EDU](https://EOPS.FULLCOLL.EDU)  EOPS@FULLCOLL.EDU

 [FC_EOPS](#)

 [\(714\) 992-7097](tel:(714)992-7097)

POINT OF CONTACTS:



ANDRE' STRONG


ASTRONG@FULLCOLL.EDU



POINT OF CONTACTS:



GERMAN BARON


GBARON@FULLCOLL.EDU



POINT OF CONTACTS:



NIGEL LEOS


NLEOS@FULLCOLL.EDU



BY ELISA LATOURELLE AND ANDREINA LUCERO PUENTE COORDINATORS

The Puente program is dedicated to improving college persistence and success rates for under-served students. It provides transfer preparation, a learning community, dedicated academic counselors, mentoring, & so much more!

Are you looking to be part of a close knit community, come check out Puente!

CONNECT WITH US:



[HTTPS://COUNSELING.FULLCOLL.EDU/PUENTE/](https://counseling.fullcoll.edu/puente/)



PUENTE@FULLCOLL.EDU



[@FC_PUENTE](https://www.instagram.com/FC_PUENTE)



[\(714\) 992-7084](tel:(714)992-7084)



POINT OF CONTACTS:

ANDREINA LUCERO



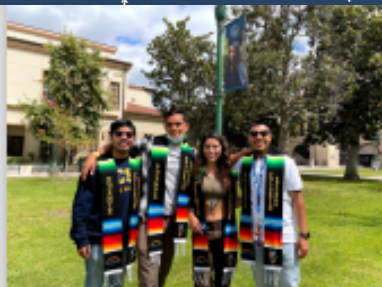
PUENTE@FULLCOLL.EDU



ELISA LATOURELLE



PUENTE@FULLCOLL.EDU



Fullerton College Puente Program



**Learning community, transfer preparation,
and so much more!**

The Puente Program offers 54 spots on a first come first serve basis.



Our orientations and application will open March 2022. Students will be able to apply through our website.

Program Benefits

- ✓ Designated English Professors, Counselors, & English tutors
- ✓ Students partake in mentoring component
- ✓ Events throughout the year to build sense of community and familia
- ✓ Build transfer awareness and confidence
- ✓ Counselors remain dedicated to students beyond the first year



<https://counseling.fullcoll.edu/puente/>



Puente@fullcoll.edu



[@FC_Puente](https://www.instagram.com/FC_Puente)

STAFF DIRECTORY



JODI BALMA

**HONORS
PROGRAM
COORDINATOR**



JBALMA@FULLCOLL.EDU

714-992-7522

1425-02



EDWARD ROTH

**DISABILITY
SUPPORT SERVICES
DIRECTOR**



EROTH@FULLCOLL.EDU

714-992-7100

842



FINANCIAL AID



FINANCIALAID.FULLCOLL.EDU

714-888-7588

115



**GILBERTO
VALENCIA**

**CADENA CULTURAL
CENTER
COORDINATOR**



GVALENCIA@FULLCOLL.EDU

714-732-5545

212



**JULIO REYES
CABEZAS**

**GRADS TO BE
STUDENT SERVICES
SPECIALIST**



JREYESCABEZAS@FULLCOLL.EDU

714-732-5548

212



**ANNIKA
SHELLENBARGER**

**PROMISE
PROJECT
COORDINATOR**



ASHELLENBARGER@FULLCOLL.EDU

714-992-7000

2001



**MELISSA
SERRATO**

**CAMPUS
COMMUNICATIONS
SPECIALIST**



MSERRATO@FULLCOLL.EDU

714-732-5054

113-04



PEGGY CARD

**TEACHER PATHWAY
COUNSELOR**



PCARD@FULLCOLL.EDU

714-992-7000

2022-12



MAYRA FRIAS

**AJ PATHWAY
COUNSELOR**



MFRIAS@FULLCOLL.EDU

714-992-7000

124



**ANDREINA
LUCERO**

**PUENTE
COUNSELOR**



ALUCERO@FULLCOLL.EDU

714-992-7084

2000



**ELISA
LATOURELLE**

**PUENTE
COUNSELOR**



EROTH@FULLCOLL.EDU

714-992-7252

2022-14



**CRISTINA
ARELLANO-DUENAS**

**EOPS/ CARE
COUNSELOR**



CARELLANODUENAS@FULLCOLL.EDU

714-992-7546

2020-11

STAFF DIRECTORY



ANDRE' STRONG

**EOPS
COORDINATOR**



ASTRONG@FULLCOLL.EDU



714-732-5381



2020-01



NIGEL LEOS

**FINANCIAL AID
SPECIALIST**



NLEOS@FULLCOLL.EDU



714-992-7000



2020



GERMAN BARON

**EOPS
STUDENT SERVICES
SPECIALIST**



GBARON@FULLCOLL.EDU



714-732-5549



2020



OLIVIA BARAJAS

**CTE
COUNSELOR**



OBARAJAS@FULLCOLL.EDU



714-992-7248



2022-07



**MARTHA PAYÁN-
HERNÁNDEZ**

**CTE
SPECIAL PROJCTCT
DIRECTOR**



MPAYAN@FULLCOLL.EDU



714-992-7585



700-04



**NICOLE
CINTRON**

**CTE
OUTREACH
SPECIALIST**



NCINTRON@FULLCOLL.EDU



714-992-7000



700



BREANN DEDIC

**STEM
COUNSELOR**



BDEDIC@FULLCOLL.EDU



714-992-7000 X 28304



2000



**JON-MICHAEL
HATTA BAUGH**

**STEM
COUNSELOR**



JHATTA BAUGH@FULLCOLL.EDU



714-992-7251

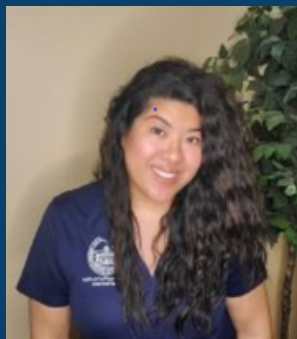


2023-R1





OUTREACH POINT OF CONTACTS AUHSD TEAM



ANAHEIM UNION HIGH
SCHOOL DISTRICT LIASON

JEANNIE NGUYEN



JNGUYEN4@FULLCOLL.EDU



SCHEDULE A ONE-ON-ONE APPOINTMENT



ANAHEIM & GILBERT/
POLARIS HIGH SCHOOL
LIASON

KATHRYN HINOJOS



KHINOJOS@FULLCOLL.EDU



**SCHEDULE A ONE-ON-ONE
APPOINTMENT**



KATELLA HIGH SCHOOL
LIASON

VALERIE SALAZAR



VSALAZAR@FULLCOLL.EDU



**SCHEDULE A ONE-ON-ONE
APPOINTMENT**



LOARA HIGH SCHOOL
LIASON

PABLO GARCIA ALVAREZ



PGARCIAALVAREZ@FULLCOLL.EDU



**SCHEDULE A ONE-ON-ONE
APPOINTMENT**



ANAHEIM HIGH SCHOOL
ASSISTANT

ELIZABETH GONZALEZ



ANAHEIM HIGH SCHOOL
ASSISTANT

YESENIA GONZALEZ



OUTREACH POINT OF CONTACTS FJUHSD TEAM



**FULLERTON JOINT UNION HIGH
SCHOOL DISTRICT LIASON**
(LA VISTA/LA SIERRA, SONORA, & TROY)

YAMILETH MONROY VILLAFRUEnte



YMONROYVILLAFUERTE@FULLCOLL.EDU



SCHEDULE A ONE-ON-ONE APPOINTMENT



**FULLERTON & LA HABRA
HIGH SCHOOL LIASON**

JULIE YANEZ



JYANEZ@FULLCOLL.EDU



**SCHEDULE A ONE-ON-ONE
APPOINTMENT**



**SUNNY HILLS
HIGH SCHOOL LIASON**

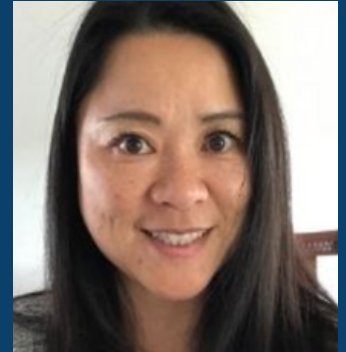
GRACE SEVILLA



GSEVILLA@FULLCOLL.EDU



**SCHEDULE A ONE-ON-ONE
APPOINTMENT**



**BUENA PARK
HIGH SCHOOL LIASON**

CHRISTINA DIAZ



CDIAZ1@FULLCOLL.EDU



**SCHEDULE A ONE-ON-ONE
APPOINTMENT**



FJUHSD ASSISTANT
JAIME MARTINEZ



FJUHSD ASSISTANT
LUIS DIRCIO MARTINEZ



OUTREACH POINT OF CONTACTS PYLUSD/BOUSD/OUTSIDE DISTRICTS TEAM



**PYLUSD, BOUSD, & OUTSIDE
DISTRICTS LIASON**
(ESPERANZA EARLY COLLEGE & HS, BUENA
VISTA, AND EL CAMINO REAL)

BRYCE HAMAMOTO



BHAMAMOTO@FULLCOLL.EDU



SCHEDULE A ONE-ON-ONE APPOINTMENT



**EL DORADO & VALENCIA
HIGH SCHOOL LIASON**

ANGELA CRISANTOS



ACRISANTOSVALENCIA@FULLCOLL.EDU



**SCHEDULE A ONE-ON-ONE
APPOINTMENT**



**BREA OLINDA & BREA CANYON
HIGH SCHOOL LIASON**

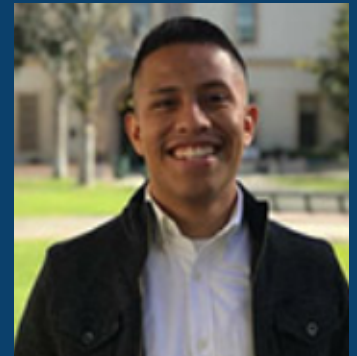
CHRISTINA DIAZ



CDIAZI@FULLCOLL.EDU



**SCHEDULE A ONE-ON-ONE
APPOINTMENT**



**YORBA LINDA
HIGH SCHOOL LIASON**

PABLO GARCIA ALVAREZ



PGARCIAALVAREZ@FULLCOLL.EDU



**SCHEDULE A ONE-ON-ONE
APPOINTMENT**



**PYLUSD/BOUSD
ASSISTANT
ASHLEY FRAGOSO**



Fullerton College
Teacher Pathway Program

Teacher Pathway

The Teacher Pathway Program (TPP) is a cohort-based learning community which serves incoming first-year students pursuing a career in education. TPP aims to assist students with educational planning and career exploration. TPP offers a wide range of academic, career, and student support services to ensure successful completion of certificate, degree and transfer goals. We provide tools, resources, and opportunities to enhance the student experience at Fullerton College. Student and counselor develop a complete academic plan which prepares students for a career in education.

Program Benefits

- Dedicated Teacher Pathway Program Counselor Teacher Pathway Program cohort specific courses Textbook Loaner Program
- Career-related Service Learning Opportunities Career exploration and community events
- Peer Mentoring
- Optional education-related field trips

CONNECT WITH US:



Visit our Website



teacherpathway@fullcoll.edu



@fcteacherpathway

Who we serve?

- Incoming First-year students (Fall admission ONLY)
- Continuing college students (Space available)
- Students intending to pursue a career in education.

Join our TTP canvas:



OTHER RESOURCES :

[HTTPS://WWW.CTA.ORG/FOR-EDUCATORS/MEET-CTA/STUDENTCTA/SCTA-OFFICERS](https://www.cta.org/for-educators/meet-cta/studentcta/scta-officers)
[HTTPS://WWW.CTC.CA.GOV/](https://www.ctc.ca.gov/)



714-992-7159



Building 100, Room 123



teacherpathway@fullcoll.edu



STEM Success Learning Community (STEM SLC)

The STEM Success Learning Community (STEM SLC)

A first-year and beyond program that provides academic and counseling support to students pursuing STEM majors. Our program's mission is to "Connect, Support, and Complete". We connect students to resources, provide in-time academic and counseling support, and promote success towards the completion of academic and career goals.

Benefits Include:

- Membership in a learning community with students who share common educational goals and interests
- STEM-specific academic and career counseling
- Reserved sections: Chemistry, Math & Counseling
- Embedded Tutoring in STEM SLC sections
- Internship/Undergraduate Research opportunities
- Career Assessment and guidance
- Campus Tours
- Guest Speakers from STEM Career Fields

2022-2023 Cohort Application opens
March 2022

CONNECT WITH US:



[HTTPS://STEM.FULLCOLL.EDU/STEMSLC/](https://stem.fullcoll.edu/stemslc/)



STEM@FULLCOLL.EDU

COUNSELING TEAM

JON-MICHAEL HATTABAUGH
[jhhattabaugh@fullcoll.edu](mailto:jhattabaugh@fullcoll.edu)

BREANN DEDIC
bdedic@fullcoll.edu

NANCY RUANO
nruano@fullcoll.edu



**WANT MORE INFORMATION?
VIST THE STEM SLC WEBSITE**



[714-992-7084](tel:714-992-7084)



STEM@FULLCOLL.EDU

Honors Program

Honors Program

BY PROGRAM COORDINATOR: JODI BALMA

The Honors Program offers a variety of courses that fulfill the general education requirements of most majors. Since students from many fields of study are encouraged to participate in the Honors Program, you will find yourself working with a group of students who come from a wide variety of backgrounds and have diverse perspectives. You will interact with many other students whose points of view may be quite different from your own. Honors courses are innovative classes that encourage all participants to explore the ideas, the people, and the writings that give shape to our world.

CONNECT WITH US:



[HTTPS://HONORS.FULLCOLL.EDU](https://honors.fullcoll.edu)



HONORS@FULLCOLL.EDU



[HTTPS://YOUTU.BE/MDPKY6ATIKW](https://youtu.be/MDPKY6ATIKW)



"Every morning
you have two
choices:
continue to
sleep with your
dreams, or wake
up and chase
them."

Robert John Meehan



JODI BALMA
HONORS PROGRAM
COORDINATOR



(714) 992-7522



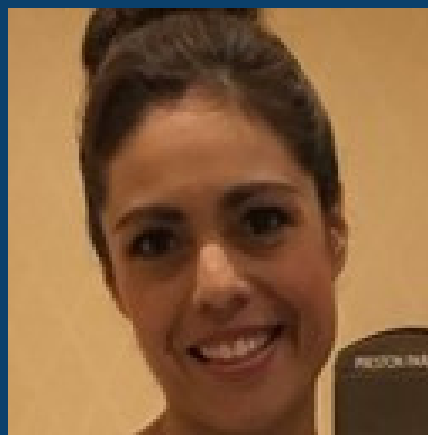
JBALMA@FULLCOLL.EDU



MEET THE EOPS TEAM

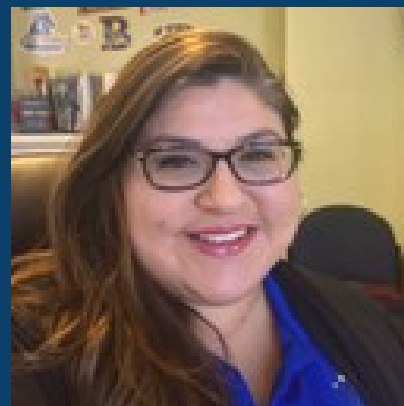
POINT OF CONTACT

DIRECTOR



**DIRECTOR OF EOPS/CARE,
CALWORKS, & FYSI
SONIA DURAN**

COORDINATOR



**INTERIM CARE COORDINATOR
BEATRIZ RESENDIZ**



MEET THE PROMISE TEAM



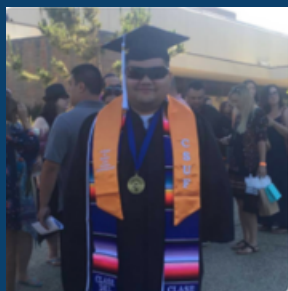
DIRECTOR
DENIZ FIERRO



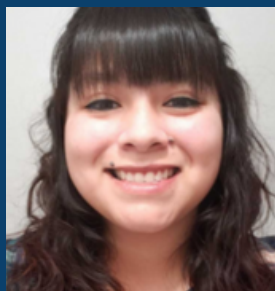
PEER MENTOR COORDINATOR
MONICA GUTIERREZ



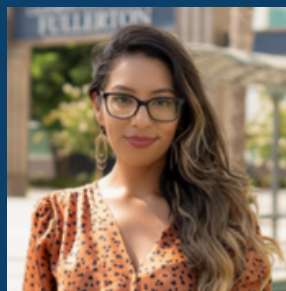
PROJECT COORDINATOR
ANNIKA SHELLNBARGER



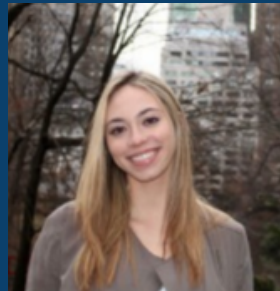
PROMISE COACH
JUAN RAMOS



PROMISE COACH
MIRIAM SANDOVAL



PROMISE COACH
MARICRUZ SANTANDER



PROMISE COACH
ANDREA SADEK



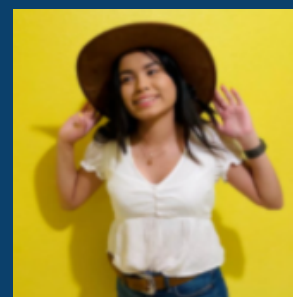
PROMISE COACH
KAMILIA ADEM



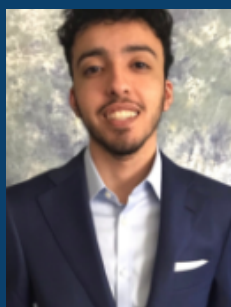
PROJECT LEAD
FATIMA ZAIDI



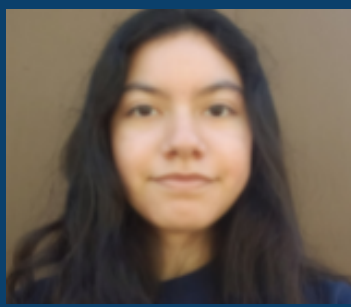
MENTOR LEAD
JANET CARRENO



SENIOR PEER MENTOR
EVELYN D. PENILLA



FINANCE LEAD
RICKY ROMAN



PEER MENTOR
CINDY NAVA

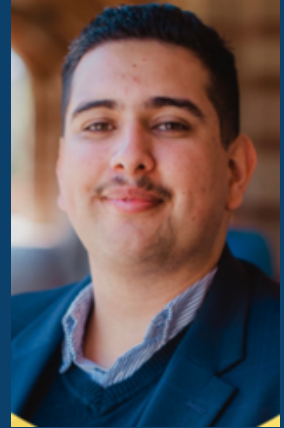


PEER MENTOR
OMAR DAUKI



MEET THE GRADS TO BE TEAM

POINT OF CONTACT



**STUDENT SERVICES
SPECIALIST
JULIO C REYES**

DIRECTOR



**DIRECTOR
CECILIA ARRIAZA**

COORDINATOR



**COORDINATOR
GILBERTO
VALENCIA**